



东方液压
EAST HYDRAULIC

东方液压

ISO9001:2000国际质量认证企业



无锡市东方液压件制造有限公司
Wuxi East Hydraulic Component Manufacture Co, Ltd



COMPANY INTRODUCTION

公司简介 ■■■■■■



无锡市东方液压件制造有限公司成立于1993年。位于无锡锡北私营经济园。主要产品为齿轮油泵和液压动力单元，产品遍布国内和国外两大市场。

产品之一齿轮油泵，以高压小排量为特点。低噪音，低电流，高容积效率，高机械效率，高总体效率。该泵在国内能生产的单位极少，其中有很多产品是外商采购的免检产品。该高压小排量泵的排量为0.15-11.8ml/r，压力0-60Mpa，主要应用于需要高压小排量泵的各种液压机具。

产品之二液压动力单元。该产品主要配套于举升机械，汽车尾板，登车桥，轮椅升降平台，自卸车，剪式平台。

我们的研发团队拥有经验丰富的工程师，有的已有超过20年的经验。利用CAD/CAM/CAPP等开发手段，进行技术升级，每年有数十种新品投放市场，满足用户。数控设备、三维测量仪和粗糙度检测仪被广泛应用，用以确保高品质。广泛使用加工中心。齿轮经过硬度检测仪、三维测量仪、粗糙度检测仪、渐开线检测仪等检测。

Established in 1993, Wuxi east Hydraulic Component Manufacture Co;Ltd lies in Wuxi north private economic garden. The main products are gear oil pump and hydraulic power unit, the products spread all over both domestic and foreign markets.

One of products gear oil pump is characterized by high pressure and small-displacement. Low noise, low current, high volumetric efficiency, high mechanical efficiency and high overall efficiency. There are a few Chinese companies can produce this gear oil pump. Many of the products are exempted from inspection when foreigner procurement. The displacement of this high-pressure and small-displacement pump is 0.15-11.8ml/r, the pressure is 0-60Mpa. The pumps are mainly used in kinds of hydraulic machinery which need high-pressure and small displacement pumps.

The second kind of the products is hydraulic power unit. The hydraulic power unit are mainly used in lifting machinery, tail-lift, dock leveler, disable vehicle lifting platform, dumper, scissors platform.

Our R&D team has plenty of experienced engineers, some with over 20 years of experience. With the CAD, CAM, CAPP and some other advanced R&D tools, our team excogitates over 10 new products. Numerical control equipment and three-dimensional measure machines and roughness machine are widely used, ensuring high quality. Machining center is widely used. There is hardness surveymeter, three-dimensional measure machines, roughness machine, surveymeter for gear.



ISO9001:2000

目录 Content

	液压动力单元型号说明..... 01 POWER UNITS ORDERING GUIDANCE
	液压动力单元回路图一..... 03 HYDAULIC CIRCUITS FOR POWER UNITS
	液压动力单元回路图二..... 04 HYDAULIC CIRCUITS FOR POWER UNITS
	汽车举升机动力单元..... 05 CAR LIFT POWER UNITS
	升降平台动力单元..... 07 LIFTING TABLE POWER UNITS
	大剪升降机用动力单元..... 08 POWER UNITS FOR DOUBLE-SCISSORS LIFT 2'
	堆高车动力单元..... 09 FORK LIFT POWER UNITS
	双向动力单元..... 10 BI-ROTATIONAL POWER UNITS
	双作用动力单元..... 11 DOUBLE ACTION POWER UNIT
	汽车尾板动力单元..... 12 TAILGATE POWER UNITS
	残障车动力单元1..... 13 WHEEL CHAIR POWER UNITS 1
	AC电机泵站..... 14 AC MOTOR PUMP STATION

DYDD-①②③④/⑤⑥⑦⑧-⑨

1. 齿轮泵公称排量 / Rated pump displacement

① CBT系列 / CBT series pumps

0.17ml/r 0.25ml/r 0.45ml/r 0.57ml/r 0.76ml/r 0.98ml/r 1.27ml/r 1.52ml/r 2.30ml/r

② CBK 系列 / CBK series pumps

0.63ml/r 0.75ml/r 1ml/r 1.3ml/r 1.6ml/r 2ml/r 2.5ml/r 3ml/r 3.3ml/r 4ml/r 4.8ml/r 5.8ml/r 6.8ml/r

③ CBW 泵系列 / CBW series pumps

0.75ml/r 1ml/r 1.3ml/r 1.6ml/r 2ml/r 2.5ml/r 3ml/r 3.3ml/r 4ml/r 4.8ml/r 5.8ml/r 6.8ml/r

2. 油箱容量 / Oil tank capacity

U—0.6L V-1.5LW-1.8L X-2.4LY-3.4L Z-4LA-6L B-8L C-10L D-12L E-14L F-16L G-20L

3. 电机电压 / Motor voltage

① 直流电机 / DC motor A-12V B-24V

② 交流电机 / AC motor C-220V D-230V E-380V F-400V G-415V H-110V

4. 电机功率 / Motor power

① 直流电机 / DC motor U-0.8kw V-1.5kw W-2.2kw X-3kw

② 交流电机 / AC motor Y-0.55kw Z-0.75kw A-1.5kw B-2.2kw C-3kw D-4kw

5. 电机类型 / Motor type

O—系统中不含电机 / No motor

T—特殊要求的电机 / The motor with special requirements

① 交流电机 / AC motor

A—立式铁壳, 花键 / Steel housing, vertical, Spline

B—立式铝壳, 花键 / Aluminum housing, vertical, Spline

C—立卧铁壳, 花键 / Steel housing, vertical & horizontal, Spline

D—立卧铝壳, 花键 / Aluminum housing, vertical & horizontal, Spline

E—立式铁壳, 扁式 / Steel housing, vertical, Tang,

F—立式铝壳, 扁式 / Aluminum housing, vertical, Tang

G—立卧铁壳, 扁式 / Steel housing, vertical & horizontal, Tang

H—立卧铝壳, 扁式 / Aluminum housing, vertical & horizontal, Tang

② 直流电机 / DC motor

I—立式铝壳, 花键 / Aluminum housing, vertical, Spline

J—立式铝壳, 扁式 / Aluminum housing, vertical, Tang

K—立卧铝壳, 花键 / Aluminum housing, vertical & horizontal, Spline

L—立卧铝壳, 扁式 / Aluminum housing, vertical & horizontal, Tang

6. 电机转速 / Motor speed

O—系统中不含电机 / No motor

T—特殊要求的电机 / The motor with special requirements



- ① 直流电机 / DC motor
U—2200rpm V-2500rpm
- ② 交流电机 50HZ / AC motor 50HZ
W-1400rpm X-2800rpm
- ③ 交流电机60HZ /AC motor 60HZ
Y-1700rpm Z-3360rpm

7. 油箱外形 Tank appearance

- A—120 口径, 钢件, 圆形, 卧式/caliber 120, steel, cylindrical, horizontal
- B—120 口径, 钢件, 圆形, 立式/caliber 120, steel, cylindrical, vertical
- C—120 口径, 钢件, 方形, 卧式/caliber 120, steel, square, horizontal
- D—120 口径, 钢件, 方形, 立式/caliber 120, steel, square, vertical
- E—138 口径, 钢件, 圆形, 卧式/caliber 138, steel, cylindrical, horizontal
- F—138 口径, 钢件, 圆形, 立式/caliber 138, steel, cylindrical, vertical
- G—138 口径, 钢件, 方形, 卧式/caliber 138, steel, square, horizontal
- H—138 口径, 钢件, 方形, 立式/caliber 138, steel, square, vertical
- I—84 口径, 塑料, 方形, 立式/caliber 84, plastic, square, vertical
- J—84 口径, 塑料, 方形, 卧式/caliber 84, plastic, square, horizontal
- K—120 口径, 塑料, 方形, 立式/caliber 120, plastic, square, vertical
- L—120 口径, 塑料, 方形, 卧式/caliber 120, plastic, square, horizontal
- M—138 口径, 塑料, 方形, 立式/caliber 138, plastic, square, vertical
- N—138 口径, 塑料, 方形, 卧式/caliber 138, plastic, square, horizontal
- O—没有油箱/no tank
- T—特殊要求油箱/the tank with special requirements

8. 电磁阀电压 solenoid valve volt

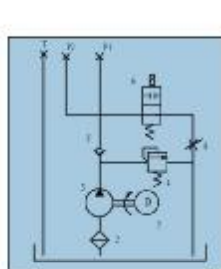
- A—12V DC 不带手动应急/12V DC without manual override function
- B—12V DC 带手动应急/12V DC with manual override function
- C—24V DC 不带手动应急/24V DC without manual override function
- D—24V DC 带手动应急/24V DC with manual override function
- O—系统中不含电磁阀/No solenoid in the system

9. 液压油路编号详细信息见附表液动力单元液压回路图

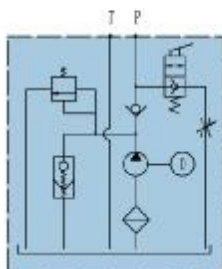
Hydraulic circuit NO. See the hydraulic schematic circuit in the following page

通过不同的液压阀组合，我公司目前已有两百多种液压回路供客户选择，典型的液压回路见下图，我公司还可以根据用户要求定制特殊的油路。

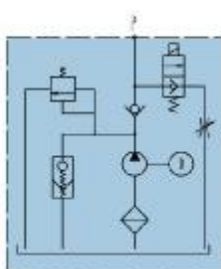
With different combination of the valves, we have more than two hundred hydraulic circuits used in the power units. The typical circuits are shown as follows. We are at your disposal to design and produce the customized circuits.



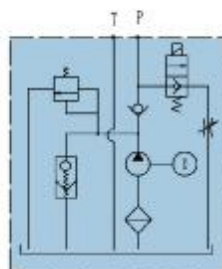
(1) 举升机电动(两出口加回油接口)



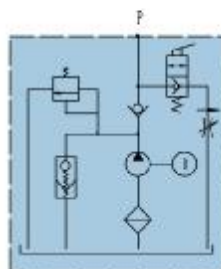
(2) 举升机手动(加回油接口)



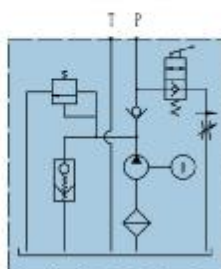
(3) 举升机电动(普通)



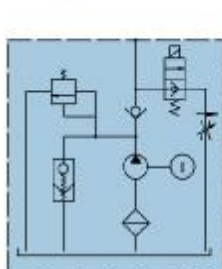
(4) 举升机电动(加回油接口)



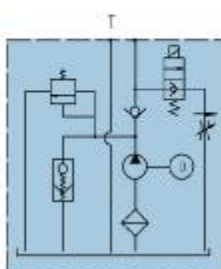
(5) 举升机手动(加压力补偿节流阀下降)



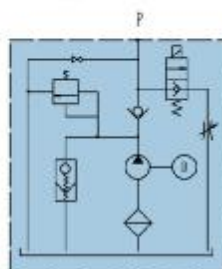
(6) 举升机手动(加压力补偿节流阀下降和回油口)



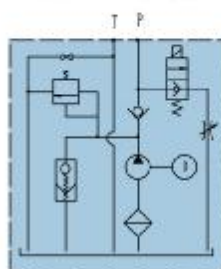
(7) 举升机电动(加压力补偿节流阀下降)



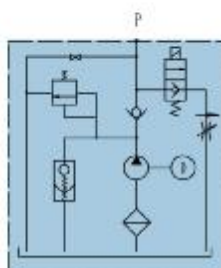
(8) 举升机电动(加压力补偿节流阀下降和回油口)



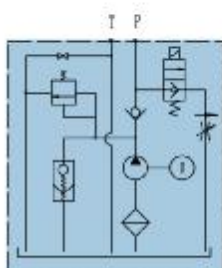
(9) 举升机电动(加旁路应急下降)



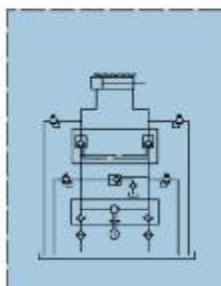
(10) 举升机电动(加旁路应急下降和回油口)



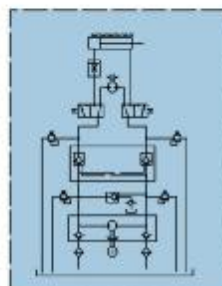
(11) 举升机电动(加旁路应急和压力补偿节流阀下降)



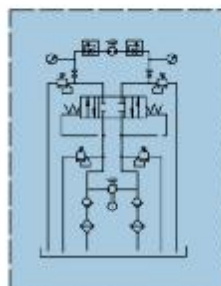
(12) 举升机电动(加旁路应急和压力补偿节流阀下降及回油口)



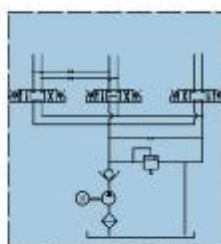
(13) 行走机械1



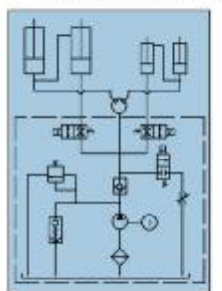
(14) 行走机械2



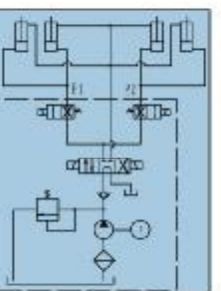
(15) 行走机械3



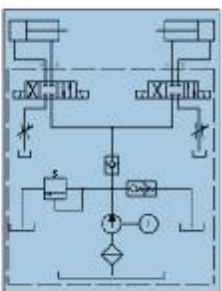
(16) 扫雪车



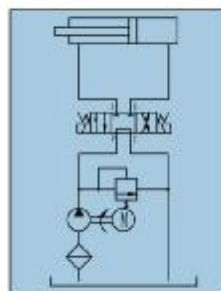
(17) 举升机(大剪)



(18) 印刷机械1



(19) 垃圾车盖板



(20) 自卸车盖盖



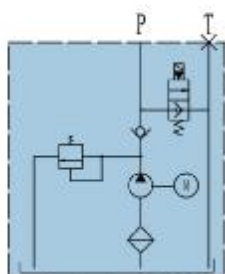
液压动力单元回路图二

HYDAULIC CIRCUITS FOR POWER UNITS

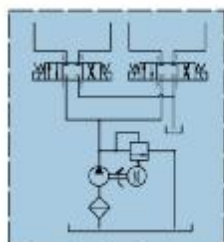


通过不同的液压阀组合，我公司目前已有两百多种液压回路供客户选择，典型的液压回路见下图，我公司还可以根据用户要求定制特殊的油路。

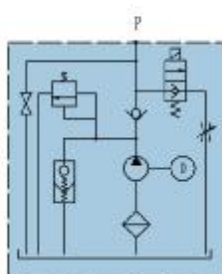
With different combination of the valves, we have more than two hundred hydraulic circuits used in the power units. The typical circuits are shown as follows. We are at your disposal to design and produce the customized circuits.



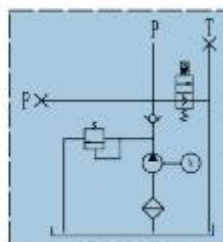
(21) 堆高车1



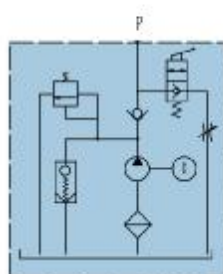
(22) 堆高车2



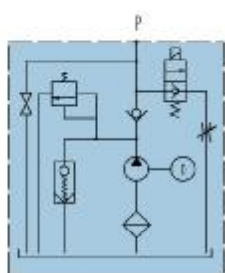
(23) 堆高车3



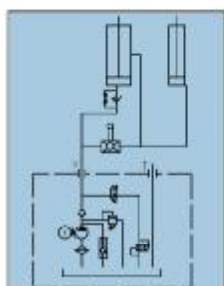
(24) 堆高车4



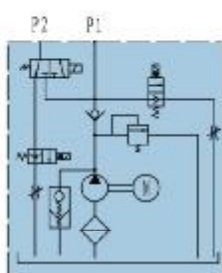
(25) 升降平台1



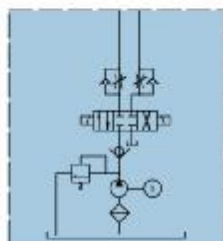
(26) 升降平台2



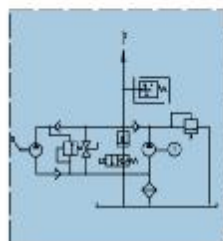
(27) 升降平台3



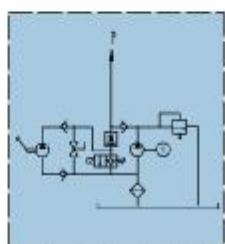
(28) 登车桥



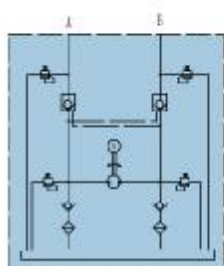
(29) 翻盖车



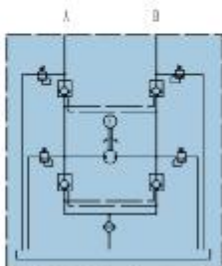
(30) 残障车1



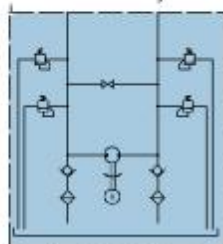
(31) 残障车2



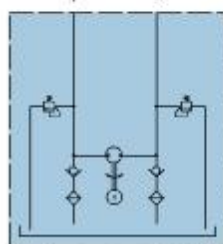
(32) 双向微形



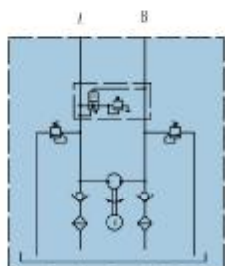
(33) 双向微形



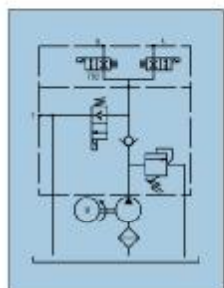
(34) 双向微形



(35) 双向微形



(36) 双向微形



(37) 汽车尾板

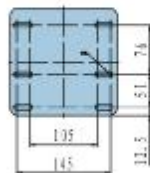
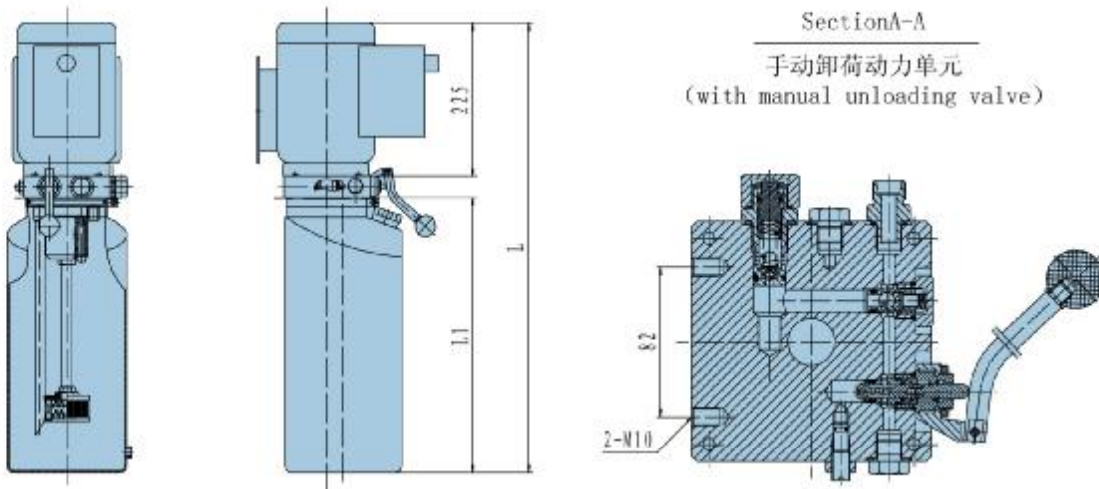
简介 General description

此液压动力单元由高压齿轮油泵，交流电机，多用集成块，液
压阀，油箱等部件有机结合在一起，它广泛应用于汽车举升机，手
动控制回油，下降速度可调，同时还可以用作液压叉车剪叉式升降
机的动力源。

Equipped with a high pressure gear pump, a AC motor, a
multifunctional manifold, valves and a tank ect, this powerunit features power
up gravity down function. Push the button on the motor to lift the machine.
the lowering movement is activated by the manual release valve, with the
lowering speed controlled by the throttle valve in the return line. The power
unit also applies to different kinds of hydraulic fork lift and scissors lift.



外形尺寸图 Outline Dimension



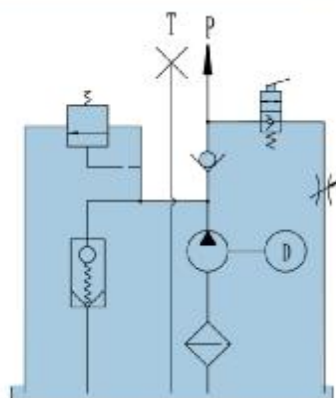
电机底板安装尺寸



汽车举升机动力单元 CAR LIFT POWER UNITS



系统工作原理 Hydraulic Circuit Diagram



型号规格说明 Model Specifications

Model 型号	Motor Volt 电机电压	Motor Power 电机功率	Displacement 油泵排量	System pressure 额定工作压力	Rated Speed 名义转速	Tank Capacity 油箱容量	总长 (mm)	
							L1	L
DYDD-2CCB-DXBA-25	220V AC	2.2KW	2ml/r	16MPa	2500RPM	10L	465	710
DYDD-3ACB-DXBA-25			3ml/r			6L	365	610
DYDD-2BCB-DXBA-25			2ml/r			8L	415	660
DYDD-2CEB-DXBA-25	380V AC	2.2KW	2ml/r	16MPa	2500RPM	10L	465	710
DYDD-3AEB-DXBA-25			3ml/r			6L	365	610
DYDD-2BEB-DXBA-25			2ml/r			8L	415	660
DYDD-2DEB-DXBA-25			2ml/r			12L	515	780
DYDD-3CEC-DXBA-25			3KW			3ml/r	20MPa	10L
DYDD-3BEC-DXBA-25	3KW	3ml/r	8L	415	680			

说明：如需不同流量的泵，压力，电机功率等系统参数。请查看液压动力单元型号说明。

Remarks: Please consult our sales engineer for the different pump displacement, motor power or tank capacity.

注意事项 Special Notes

1. 此动力单元工作制为S3工作制，不可连续运转，30秒开，270秒停。
2. 安装前必须保证油缸，油管，接头等液压元件清洁无任何杂质粘附。
3. 液压油粘度应为15-68CST，应清洁无杂质，推荐使用N46号液压油。
4. 系统使用第一个100小时后，应更换液压油，以后每3000小时更换一次液压油。
5. 本液压动力单元适用于垂直安装。

1. The duty of this power unit is S3, i. e., 30seconds on and 270 seconds off.
2. Clean all the hydraulic parts concerned before mounting the power unit.
3. Viscosity of the hydraulic oil should be 15-68 cst, which should also be clean and free of impurities. N46 hydraulic oil is recommended.
4. Oil changing is required after the initial 100 operation hours, afterwards once every 3000 hours.
5. The power unit should be mounted vertically.

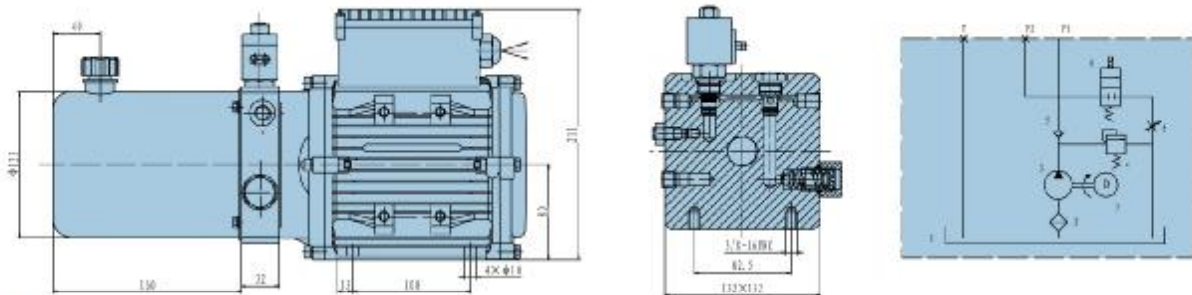
简介 General description

此液压动力单元由高压油泵齿轮，交流电机，多用集成块，液压阀，油箱等零部件有机的结合在一起，应用于轻型升降平台，液压叉车，举升机等设备，电磁卸荷阀实现下降，下降速度由可调节节流阀调节。

Consisting of high pressure gear pump, AC motor, multifunctional manifold, valves, tank, etc, this power unit has been widely used in the industry of logistic devices, such as minifork lift, scissors lift and ariel working platform. The lowering movements is controlled by the solenoid valve with the speed controlled by the adjustable throttle valve.



外形尺寸图 Outline Dimension



型号规格说明 Model Specifications

Model 型号	Motor Volt 电机电压	Motor Power 电机功率	Rated Speed 名义转速	Displacement 油泵排量	System Pressure 溢流阀压力	Tank Capacity 油箱容量
DYDD-2ZCA-CABB-1	220V AC	1.5KW	1400 RMP	2ml/r	20MPa	4L
DYDD-2.5ACA-CABB-1				2.5ml/r	20MPa	6L
DYDD-3.3BCA-CABB-1				3.3ml/r	16MPa	8L
DYDD-2BEB-DEBB-1	380V AC	2.2KW	2880 RMP	2ml/r	20MPa	8L
DYDD-2.5CEB-DEBB-1				2.5ml/r	20MPa	10L
DYDD-3.3CEB-DEBB-1				3.3ml/r	16MPa	12L

说明：如需不同流量的泵，压力，电机功率等系统参数。请查看液压力单元型号说明。

Remarks: Please consult our sales engineer for the different pump displacement, motor power or tank capacity.

注意事项 Special Notes

1. 此动力单元采用间隙工作制。
2. 安装前必须保证油缸，油管，接头等液压元件清洁无任何杂质粘附。
3. 液压油粘度应为15-68CST，应清洁无杂质，推荐使用N46号液压油。
4. 系统使用第一个100小时后，应更换液压油，以后每3000小时更换一次液压油。
5. 本液压力单元适用于水平安装。

1. The duty of this power unit is intermittent.
2. Clean all the hydraulic parts concerned before mounting the power unit.
3. Viscosity of the hydraulic oil should be 15-68 cst, which should also be clean and free of impurities. N46 hydraulic oil is recommended.
4. Oil renewing is required after the initial 100 operation hours, afterwards once every 3000 hours.
5. The power unit should be mounted horizontally.



大剪升降机用动力单元

POWER UNITS FOR DOUBLE-SCISSORS LIFT 2'



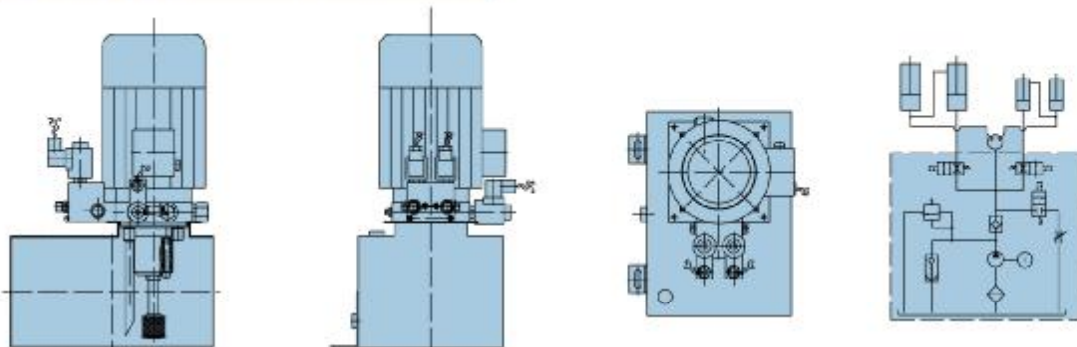
简介 General description



此液压力单元采用双向止回阀实现两条油路的完全隔离，使两条油路的上升和下降动作互不干扰，是多缸单独升降系统的理想液压源，该动力单元广泛应用于大剪升降机。

Equipped with the zero leakage double-check solenoid valves, this power unit fulfils the complete separation of the two independent circuits, which are respectively for the main platform and subordinate platform of the double scissors lift. Two cut-off valves are used for lowering the machining manually in case of power failure. By increasing the solenoid valves, it is easy to get more independent circuits, which are used to control the corresponding cylinders.

外形尺寸图 Outline Dimension



型号规格说明 Model Specifications

Model 型号	Motor Volt 电机电压	Motor Power 电机功率	Displacement 油泵排量	System Pressure 额定工作压力	Rated Speed 名义转速	Tank Capacity 油箱容量
DYDD-28CA-BWBC-17	220V AC	1.5KW	2ml/r	22MPa	1400 RMP	8L
DYDD-30CA-BWBC-17			3ml/r	20MPa		12L
DYDD-28EW-BXBC-17	380V AC	2.2KW	2ml/r	18MPa	2800 RMP	14L
DYDD-2FEW-BXBC-17			2ml/r	15MPa		16L
DYDD-3FEW-BXBC-17			3ml/r	10MPa		16L

说明：如需不同流量的泵，压力，电机功率等系统参数。请查看液压力单元型号说明。

Remarks: Please consult our sales engineer for the different pump displacement, motor power or tank capacity.

注意事项 Special Notes

1. 此动力单元工作制为S3工作制，不可连续运转，30秒开，270秒停。
2. 安装前必须保证油缸，油管，接头等液压元件清洁无任何杂质粘附。
3. 液压油粘度应为15-68CST，应清洁无杂质，推荐使用N46号液压油。
4. 系统使用第一个100小时后，应更换液压油，以后每3000小时更换一次液压油。
5. 本液压力单元适用于立式安装。

1. The duty of this power unit is S3, i. e., 30seconds on and 270 seconds off.
2. Clean all the hydraulic parts concerned before mounting the power unit.
3. Viscosity of the hydraulic oil should be 15-68 cst, which should also be clean and free of impurities. N46 hydraulic oil is recommended.
4. Oil changing is required after the initial 100 operation hours, afterwards once every 3000 hours.
5. The power unit should be mounted vertically.

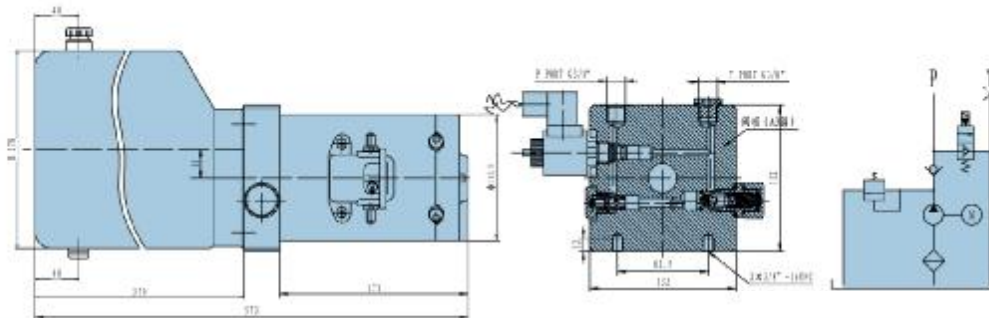
简介 General description

此液压动力单元由高压齿轮油泵，直流电机，多用集成块，液压阀，油箱等部件有机结合在一起，系典型的动力上升，重力下降液压回路。启动电机实现上升，打开电磁卸荷阀实现下降，下降速度由调节螺钉控制。本系列产品是各种堆高车，小型升降平台等物流设备的理想动力源。

Equipped with a high pressure gear pump, a DC motor, a multifunctional manifold, valves and a tank ect, this powerunit features power up gravity down function. Start the motor to lift the machine and the lowering movement is activated by the solenoid valve with the lowering speed controlled by the adjusting screw. Products of this series can be widely used in the industry of logistic devices such as fork lift, mini lift table ect.



外形尺寸图 Outline Dimension



型号规格说明 Model Specifications

Model 型号	Motor Volt 电机电压	Motor Power 电机功率	Displacement 油泵排量	System Pressure 额定工作压力	Rated Speed 名义转速	Tank Capacity 油箱容量
DYDD-1.3YAV-HVAA-23	12V DC	1.5KW	1.3ml/r	22MPa	2500 RMP	3.4L
DYDD-1.6AAV-HVAA-23			1.6ml/r	20MPa		6L
DYDD-2AAV-HVAA-23			2ml/r	18MPa		6L
DYDD-2ABW-HVAA-23	24V DC	2.2KW	2ml/r	15MPa		6L
DYDD-2.5BGW-HVAA-23			2.5ml/r	10MPa		8L
DYDD-3BBW-HVAA-23			3ml/r	8Mpa		8L

说明：如需不同流量的泵，压力，电机功率等系统参数。请查看液压动力单元型号说明。

Remarks: Please consult our sales engineer for the different pump displacement, motor power or tank capacity.

注意事项 Special Notes

1. 此动力单元采用间歇工作制。
2. 安装前必须保证油缸，油管，接头等液压元件清洁无任何杂质粘附。
3. 液压油粘度应为15-68CST，应清洁无杂质，推荐使用N16号液压油。
4. 系统使用第一个100小时后，应更换液压油，以后每3000小时更换一次液。
5. 本液压动力单元适用于水平安装。

1. The duty of this power unit is intermittent.
2. Clean all the hydraulic parts concerned before mounting the power unit.
3. Viscosity of the hydraulic oil should be 15-68 cst, which should also be clean and free of impurities. N46 hydraulic oil is recommended.
4. Oil renewing is required after the initial 100 operation hours, afterwards once every 3000 hours.
5. The power unit should be mounted horizontally.



双向动力单元 BI-ROTATIONAL POWER UNITS



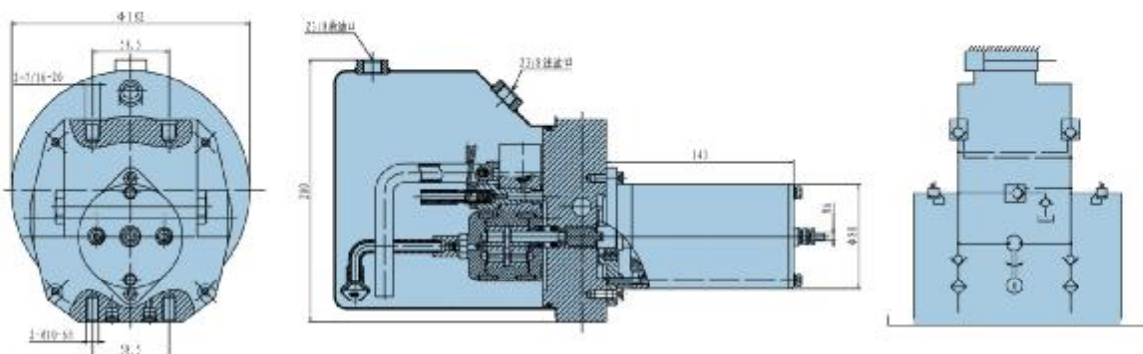
简介 General description



此液压力单元双向齿轮油泵，直流电机，多用集成块，液压阀，油箱等部件有机结合在一起，尤其是该双向动力单元在没有换向阀的情况下，同样能顺利完成换向任务，该动力单元体积小，美观，同时该动力单元结构紧凑，性能稳定，广泛应于车辆，机床能设备。

Equipped with a reversible gear pump, double P. Ochecke valves, relief valves and a tank etc. this power unit can drive a double acting cylinder to extend and retract without a directional solenoid valve. It is typically used in recreational vehicles and machine tools.

外形尺寸图 Outline Dimension



型号规格说明 Model Specifications

Model 型号	Motor Volt 电机电压	Motor Power 电机功率	Rated Speed 名义转速	Displacement 油泵排量	System Pressure 溢流阀压力	Tank Capacity 油箱容量
DYDD-0.45AU-LWT0-32	12V DC	0.8KW	4500 RMP	0.45nl/r	15MPa	1.8L
DYDD-0.57XAU-LWT0-32				0.5nl/r		3.4L
DYDD-0.76AAU-LWT0-32				0.76nl/r		6L

说明：如需不同流量的泵，压力，电机功率等系统参数。请查看液压力单元型号说明。

Remarks: Please consult our sales engineer for the different pump displacement, motor power or tank capacity.

注意事项 Special Notes

1. 此动力单元采用间隙工作制。
2. 安装前必须保证油缸，油管，接头等液压元件清洁无任何杂质粘附。
3. 液压油粘度应为15-68CST，应清洁无杂质，推荐使用N46号液压油。
4. 系统使用第一个100小时后，应更换液压油，以后每3000小时更换一次液压油。
5. 本液压力单元适用于水平安装。

1. The duty of zhis power unit is intermittent.
2. Clean all the hydraulic parts concerned before mounting the po wer unit.
3. Viscosity of the hydraulic oil should be 15-68 cst, which should also be clean and free of impurities. N46 hydraulic oil is recommended.
4. Oil renewing is required after the initial 100 operation hours, afterwards once every 3000 hours .
5. The power unit should be mounted horizontally.



汽车尾板动力单元 TAILGATE POWER UNITS

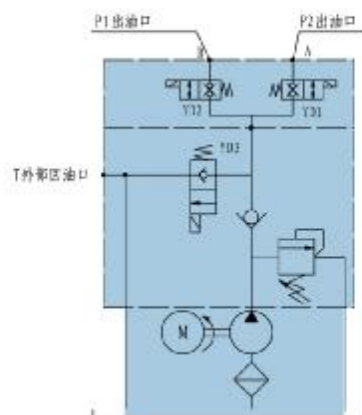
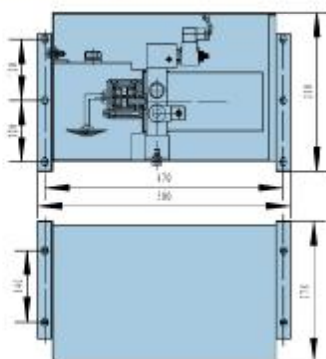
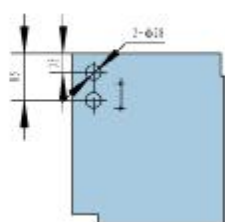


简介 General description

此动力单元有两条独立的油路，分别用于控制轻型垃圾车尾板装置的提升缸和翻转缸。

Equipped with two zero leakage double-check solenoid valves, this power unit has independent circuits for the lifting cylinder and rotating cylinder of tailgate of electrical garbage truck.

外形尺寸图 Outline Dimension



型号规格说明 Model Specifications

Model 型号	Motor Volt 电机电压	Motor Power 电机功率	Displacement 油泵排量	System Pressure 额定工作压力	Rated Speed 名义转速	Tank Capacity 油箱容量
DYDD-1.6BA0-FVDC-37	12V DC	1.6KW	1.6ml/r	16MPa	2500RPM	8L
DYDD-2.00AP-FVDC-37		2.0KW	2.0ml/r	16MPa	2500RPM	12L
DYDD-2.5GBQ-FVDC-37		2.5KW	2.5ml/r	16MPa	2500RPM	20L
DYDD-1.6BB0-FVDC-37	24V DC	1.6KW	1.6ml/r	16MPa	2500RPM	8L
DYDD-2.00BP-FVDC-37		2.0KW	2.0ml/r	16MPa	2500RPM	12L
DYDD-2.5GAQ-FVDC-37		2.5KW	2.5ml/r	16MPa	2500RPM	20L

说明：如需不同流量的泵，压力，电机功率等系统参数。请查看液压力单元型号说明。

Remarks: Please consult our sales engineer for the different pump displacement, motor power or tank capacity.

注意事项 Special Notes

1. 此动力单元工作制为S3工作制，不可连续运转，30秒开，270秒停。
2. 安装前必须保证油缸，油管，接头等液压元件清洁无任何杂质粘附。
3. 液压油粘度应为15-68CST，应清洁无杂质，推荐使用N46号液压油。
4. 系统使用第一个100小时后，应更换液压油，以后每3000小时更换一次液压油。
5. 本液压力单元适用于卧式安装。

1. The duty of this power unit is S3, i. e., 30seconds on and 270 seconds off.
2. Clean all the hydraulic parts concerned before mounting the power unit.
3. Viscosity of the hydraulic oil should be 15-68 cst, which should also be clean and free of impurities. N46 hydraulic oil is recommended.
4. Oil renewing is required after the initial 100 operation hours, afterwards once every 3000 hours.
5. The power unit should be mounted horizontally.

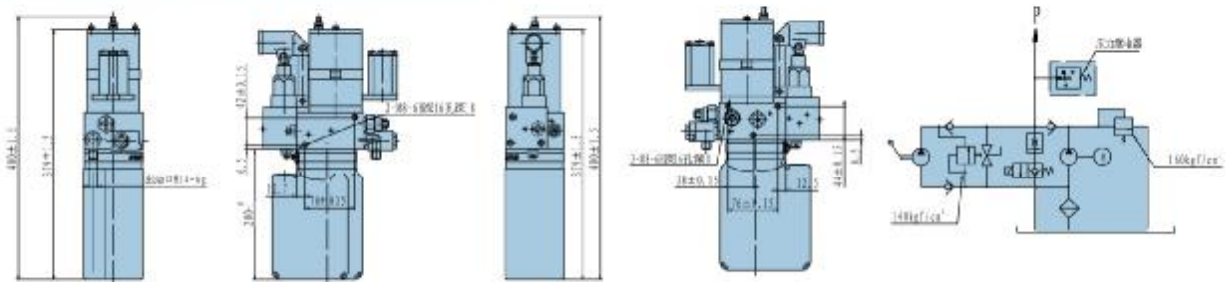
简介 General description

此液动力单元专为残疾人车用轮椅升降台设计，由高压齿轮油泵、直流电机，多用集成块，液压阀，油箱等部件有机结合在一起，系典型的动力上升，重力下降液压回路。启动电机实现上升，打开电磁卸荷阀实现下降，下降速度由调节螺钉控制。为了设备方便在无电状态下操作，该动力单元特意配备了手动泵动力源，便于随时随地操作。

The power unit is designed exclusively for lifting the disabled people's wheelchair when they are getting in or off a certain type of vehicles. Equipped with a high pressure gear pump, a DC motor, a multifunctional manifold, valves and a tank, this power unit features power up gravity down function. Start the motor to lift the machine and the lowering movement is activated by the solenoid valve with the lowering speed controlled by the adjusting screw. A handpump is available for occasional power failure.



外形尺寸图 Outline Dimension



型号规格说明 Model Specifications

Model 型号	Motor Volt 电机电压	Motor Power 电机功率	Rated Speed 名义转速	Displacement 油泵排量	System Pressure 溢流阀压力	Tank Capacity 油箱容量
DYDD-0.57VAL-DN0B-30	12VDC	0.8KW	4500 RPM	0.57ml/r	16MPa	1.8L
DYDD-0.983AL-DN0B-30				0.98ml/r		2.4L
DYDD 1.27VAL DN0B 30				1.27ml/r		3.4L

说明：如需不同流量的泵，压力，电机功率等系统参数。请查看液动力单元型号说明。

Remarks: Please consult our sales engineer for the different pump displacement, motor power or tank capacity.

注意事项 Special Notes

1. 此动力单元采用间歇工作制
2. 安装前必须保证油缸，油管，接头等液压元件清洁无任何杂质粘附。
3. 液压油粘度应为15-68CST，应清洁无杂质，推荐使用N46号液压油。
4. 系统使用第一个100小时后，应更换液压油，以后每3000小时更换一次液压油。
5. 本液动力单元适用于垂直安装。

1. The duty of this power unit is intermittent.
2. Clean all the hydraulic parts concerned before mounting the power unit.
3. Viscosity of the hydraulic oil should be 15-68 cst, which should also be clean and free of impurities. N46 hydraulic oil is recommended.
4. Oil renewing is required after the initial 100 operation hours, afterwards once every 3000 hours.
5. The power unit should be mounted vertically.



AC电机泵站 AC MOTOR PUMP STATION

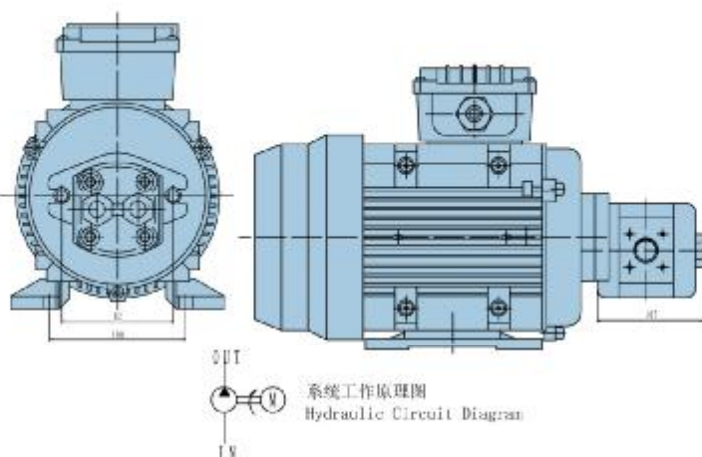


简介 General description

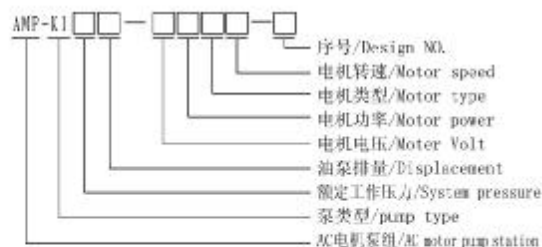
此液压泵站由CBK1高压齿轮油泵与交流电机组成，性能稳定，是大型机械设备的理想动力源。本系列产品是小型升降平台等物流设备的理想动力源。

Consisting of a heavy duty AC motor and a high pressure gear pump, this motor pump group is widely used as the power unit of all kind of hydraulic systems, such as mini lift table ect.

外形尺寸图 Outline Dimension



型号说明 Ordering Code



型号规格说明 Model Specifications

Model 型号	Motor Volt 电机电压	Motor Power 电机功率	Displacement 油泵排量	System Pressure 额定工作压力	Rated Speed 名义转速
AMP-K1E4-8GNB-B	380V AC	1.5KW	4ml/r	14MPa	1400 RMP
AMP-K1D14-8HNB-B	380V AC	3.7KW	7ml/r	20MPa	
AMP-K1D10-4HNB-B	380V AC	3KW	4ml/l	10MPa	
AMP-K1F7-4JNB-B	380V AC	2.2KW	14ml/r	8MPa	
AMP-K1D15-4JNB-B	380V AC	3.7KW	15ml/r	8MPa	

注意事项 Special Notes

1. 此动力单元工作制为S1.
2. 安装前必须保证油缸，油管，接头等液压元件清洁无任何杂质粘附。
3. 液压油粘度应为15-68CST，应清洁无杂质，推荐使用N46号液压油。
4. 系统使用第一个100小时后，应更换液压油，以后每3000小时更换一次液压油。
5. 本液压动力单元适用于水平安装。

1. The duty of zhis power unit is S1.
2. Clean all the hydraulic parts concerned before moun ting the power unit.
3. Viscosity of the hydraulic oil should be 15-68 cst, which should also be clean and free of impurities. N46 hydraulic oil is recommended.
4. Oil renewing is required after the initial 100 operation hours, afterwards once every 3000 hours.
5. The power unit should be mounted horizontally.



东方液压

EAST HYDRAULIC

邮政编码:214000

电话:+86-510-83101137

传真:+86-510-83105995

Website: www.wxdfyy.com

Post code:214000

Tel: +86-510-83101137

Fax:+86-510-83105995

E-Mail: web@wxdfyy.com